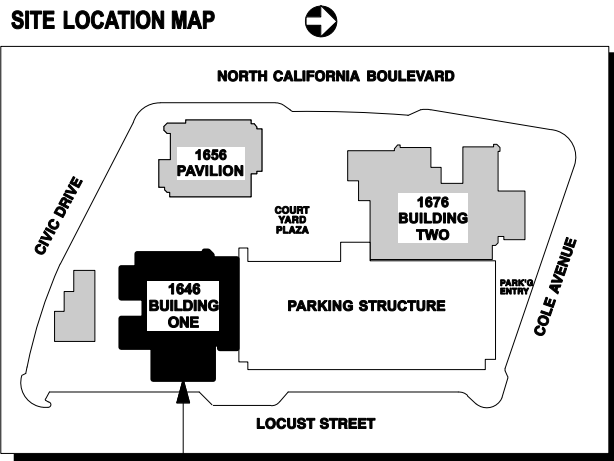
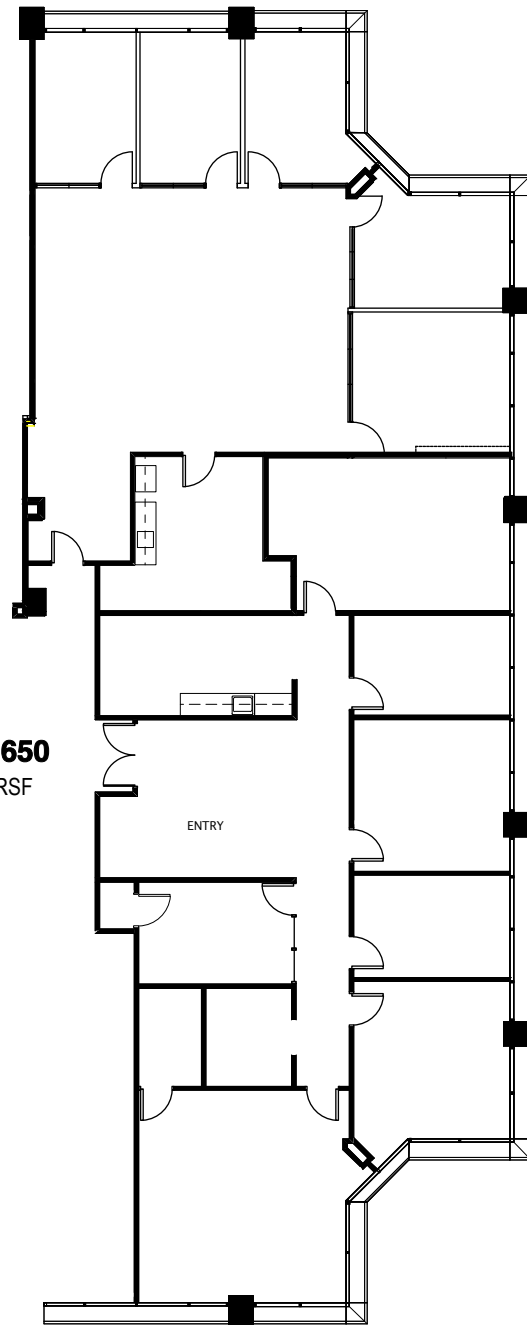


SUITE 680
2,384 RSF

SUITE 650
3,081 RSF



BUILDING ONE
1646 N. CALIFORNIA BLVD.
WALNUT CREEK, 94596



TRANSWESTERN[®]

500 Ygnacio Valley Road
Suite 100
Walnut Creek, Ca 94596
T (925) 357-2000
F (925) 357-2001

LEASING AGENTS

Scott Ellis
(925) 357-2005

Matt Hurd
(925) 357-2013

Growers Square

1646 N. California Blvd.
Walnut Creek, CA 94596

First Floor

Owned by:
Growers Square, Inc.

Managed by:

CB Richard Ellis

Approximate Area Calculations
Subject To Verification:

5,465 rsf

As-built Plan To Be Verified

This information displayed while not guaranteed has been secured by sources we believe to be reliable. This information is subject to errors & omissions. Any tenant should conduct their own investigation.

Plan Revision - 11-3-16