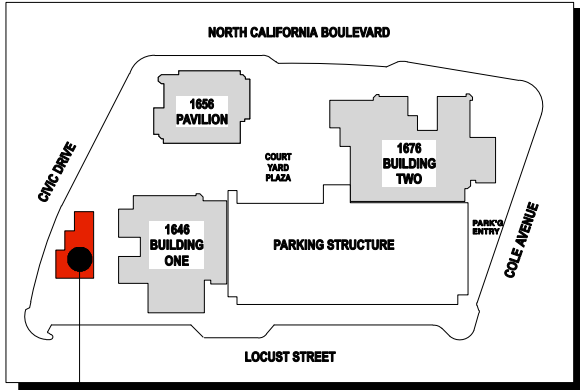


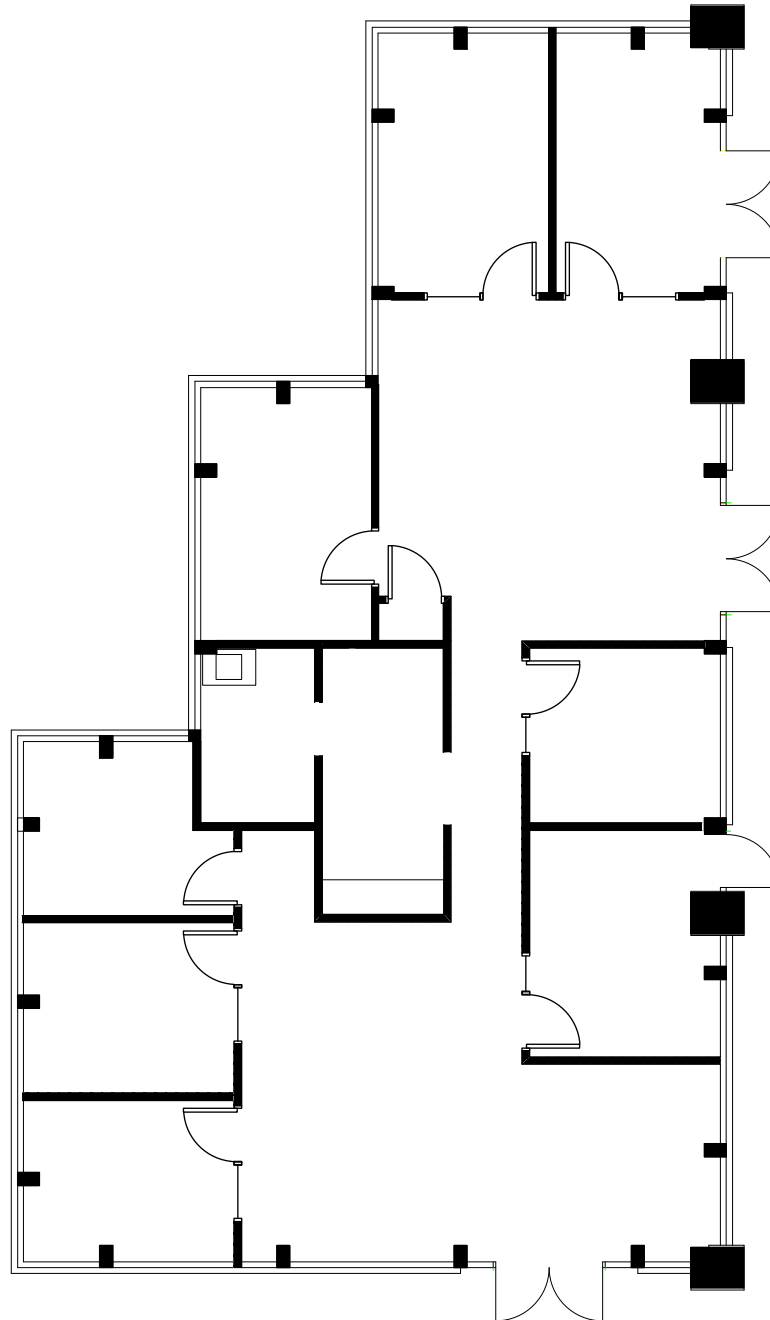
SITE LOCATION MAP



SUITE FLOOR LOCATION
 BUILDING ONE
 1646 N. CALIFORNIA BLVD.
 WALNUT CREEK, 94596

SUITE 103

CIVIC DRIVE



TRANSWESTERN®

500 Ygnacio Valley Road
 Suite 100
 Walnut Creek, Ca 94596
 T (925) 357-2000
 F (925) 357-2001

LEASING AGENTS

Scott Ellis
(925) 357-2005

Matt Hurd
(925) 357-2013

Growers Square

1646 N. California Blvd.
 Walnut Creek, CA 94596

First Floor

Owned by:
Growers Square, Inc.

Managed by:

CB Richard Ellis

Approximate Area Calculations
 Subject To Verification.

2,494 rsf

As-built Plan To Be Verified

This information displayed while not guaranteed has been secured by sources we believe to be reliable. This information is subject to errors & omissions. Any tenant should conduct their own investigation.

Plan Revision - 5-12-16